

LaSalle Mariners Yacht Club
5th Annual Detroit River Fall Regatta
Saturday October 12, 2024

Sailing Instructions

1 RULES

- 1.1 This regatta will be governed by the rules as defined in the Racing Rules of Sailing 2021-2024.
- 1.2 The Force 5 Class Association Rules found at force5class.org will apply to all Force 5 class Races.

2 NOTICES TO COMPETITORS

- 2.1 Notices to competitors will be posted on the official notice board located inside the LaSalle Mariners Yacht Club (LMYC) clubhouse.

3 SCHEDULE OF RACES

- 3.1 All races will be sailed on October 12, 2024
- 3.2 Starts will be scheduled and signalled as follows:
- 3.3 The Scheduled time for the first warning signal is 11:55am. The warning signal for each succeeding class shall be made with the starting signal of the preceding class.

Class	Flag
Force 5	Force 5 Class Flag
Other one design classes	Pink and/or Yellow Flag
Mixed Fleet	Green Flag

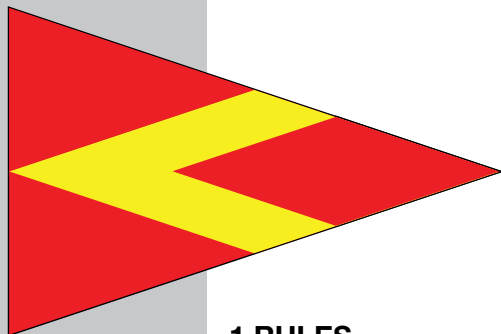
- 3.4 No warning signals will be made after 3:00pm.
- 3.5 Flag "A" displayed, with no sound, and the blue flag while boats are finishing will signify "No more racing today"

4 CLASS FLAGS

- 4.1 The Force 5 Class flag shall be displayed for all Force 5 starts.
- 4.2 For all other starts of one design fleets, the pink and/or yellow flags shall be displayed.
- 4.3 For the mixed fleet which will be scored based on PHRF ratings, the green flag shall be displayed.
- 4.4 Class information, schedule and flag colours will be made available after registration based on entries received.

5 RACING AREAS COURSES AND MARKS

- 5.1 Attachment A shows the approximate location of the racing areas and government navigational marks.
- 5.2 The diagrams in Attachment B show the courses, directions and course marks.
- 5.3 No later than the warning signal, the race committee vessel will display the course.
- 5.4 Legs of a course will not be changed after the preparatory signal. This changes RRS 33.
- 5.5 The starting and finishing marks will be the flag on the staff of the RC boat and the orange flag on the staff of the orange River Marker. (orange styrofoam platform).



6 THE START

- 6.1 Races will be started by using RRS 26 with the warning signal made five minutes before the starting signal.
- 6.2 To alert boats that a sequence of races will begin soon, there will be 5 horn blasts one minute prior to the warning signal and class flag going up.
- 6.3 The starting line will be between an orange mark with a staff displaying an orange flag on the water and the staff displaying the orange flag on the RC boat. Approximate racing area is shown in Attachment A.
- 6.4 Boats whose warning signal has not been made shall avoid the starting area during the starting sequence for races (DP)
- 6.5 A boat that does not start within 4 minutes after her starting signal will be scored Did Not Start (DNS) without a hearing. This changes RRS A4 and A5.

7 THE FINISH

- 7.1 The finishing line will be between the orange river marker and the RC boat displaying the blue flag.

8 PENALTIES

- 8.1 For all classes, RRS 44.1 is changed so that the two-turns penalty is replaced by a one-turn penalty

9 TIME LIMITS AND TARGET TIMES

- 9.1 Boats failing to finish within 5 minutes after the first boat sails the course and finishes, may be finished in place. They will be notified by a safety boat at that time. This changes RRS 35, A4 and A5.

10 PROTESTS AND REQUESTS FOR REDRESS

- 10.1 Protest forms are available on the official notice board and from the race committee. Protests and requests for redress shall be delivered there within the appropriate time limit.
- 10.2 For each class, the protest time limit is 60 minutes after the last boat has finished the last race of the day or the race committee signals no more racing today, whichever is later.
- 10.3 Notices of protests will be posted no later than 30 minutes after the protest time limit to inform competitors of hearings in which they are parties or names as witnesses. Hearings will be held in a private area on the club grounds.

11 SCORING

- 11.1 For all Force 5 and one design starts, the one design scoring system shall apply.
- 11.2 For the mixed class start, the handicap scoring system will apply.
- 11.3 One race is required to be completed to constitute a series.
- 11.4 When fewer than 5 races have been completed, a boat's series score shall be the total of her race scores. When 5 or more races have been completed, a boat's series score shall be the total of her race scores excluding her worst score.

12 SAFETY REGULATIONS AND EQUIPMENT

- 12.1 All boats are required to check in with the RC boat at the beginning of the series.
- 12.2 A boat that retires from a race shall notify the race committee as soon as possible.
- 12.3 Due to the strong current and the nature of the sailing area in the Detroit river, wearing PFD's is strongly recommended during all races. If flag "Y" is displayed, PFD's must be worn for all classes. For Force 5 boats, this conforms to Force 5 Class Rules, Article VIII, section 8.01.
- 12.4 All boats must have a tow line of at least 15 feet attached to the bow, or 20 feet attached to the mast. For Force 5 boats, this changes the Force 5 Class Association Rules Article VIII, section 8.02.

13 PRIZES

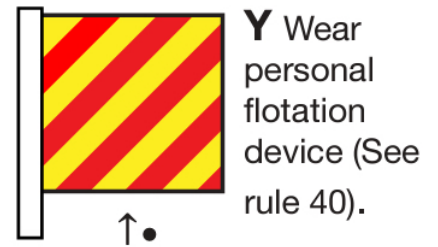
13.1 Each first place winner's name will be included on the Detroit River Dinghy Regatta plaque that resides in the LMYC Clubhouse.

14 DISCLAIMER OF LIABILITY

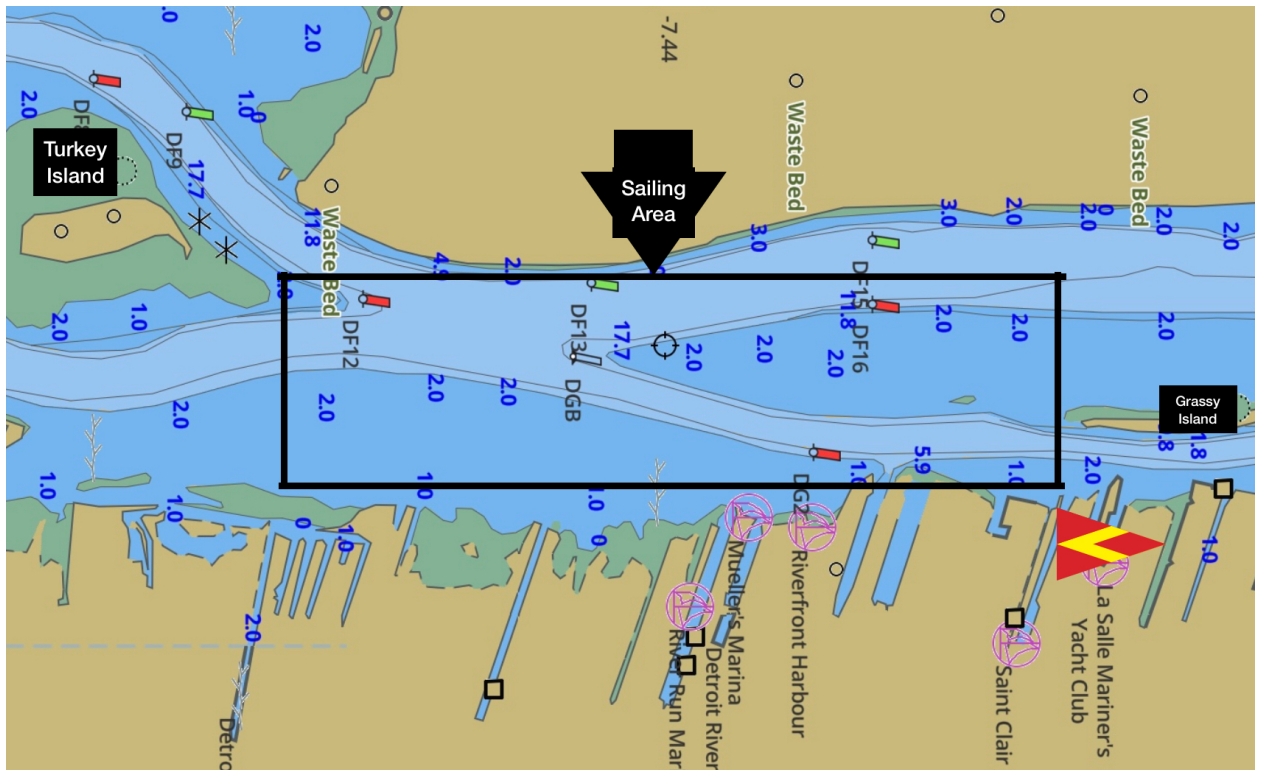
14.1 Competitors participate in the regatta, entirely at their own risk. See RRS 3, Decision to race. The organizing authority will not accept and liability for material damage or personal injury or death sustained in conjunction with or prior to, during, or after the regatta.

15 PHOTO AND VIDEO DISCLAIMER

17.1 By participating in the event, competitors give absolute right and permission for any photograph and video footage taken of themselves and the boat there are sailing during the event to be published in any media whatsoever, for editorial, advertising, or to be used in press information without compensation.

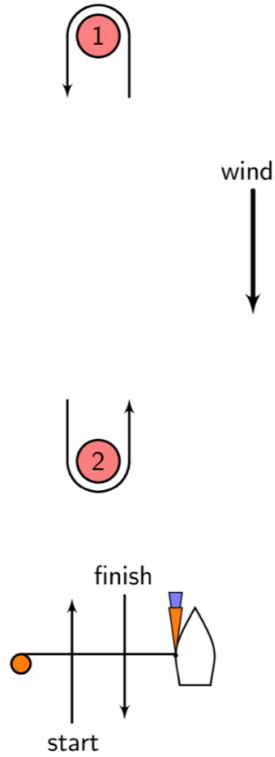


Attachment A Approximate Sailing Area



Attachment B Basic Courses

Start RC Position A

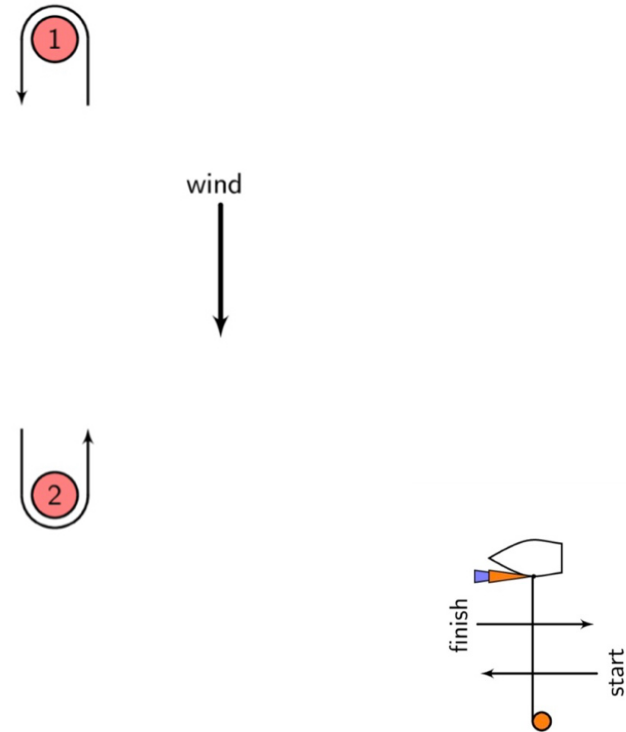


Signal	Mark rounding order
L1	Start-1-Finish
L2	Start-1-2-1-Finish
L3	Start-1-2-1-2-1-Finish

PHRF Ratings for Dinghies

OD 14	200
ILCA 7	217
RS Quest	228
Force 5	242 (Standard Rig)
ILCA 6	250
420	256
Sunfish	268
Force 5	277 (Short Rig)
CL14	277
RS Feva	301

Start RC Position B



Signal	Mark rounding order
L1	Start-2(starboard)-1-2-Finish
L2	Start-2(starboard)-1-2-1-2-Finish
L3	Start-2(starboard)-1-2-1-2-1-2-Finish